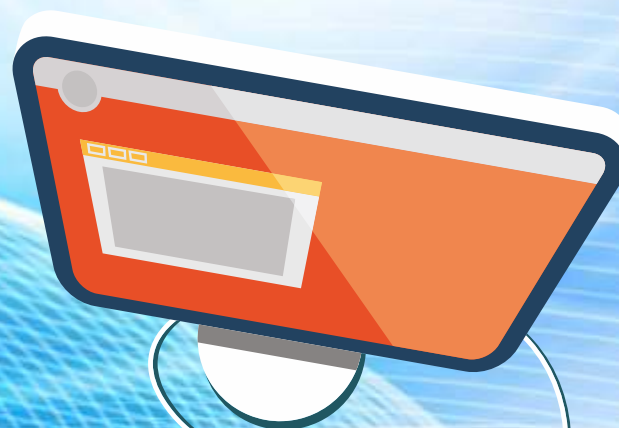




THE ULTIMATE
THIN CLIENT SOLUTION
WITH AMAZING PERFORMANCE
ON GREEN TECHNOLOGY REVOLUTION



Smart **2510-V2**

Home

Intro

Benefits

Manages

Specs

Interface

Contact



Smart **2510V2**

INTRODUCTION

Compared to traditional PC, Thin Client can benefit enterprise users with higher IT management efficiency, productivity and lower TCO.

SMARTSTATION Thin Client is the smallest, most advanced thin client on the market. It combines great performance, stateless operation, low power consumption, remote management and simple device setup and imaging. This small, lightweight, solid state unit can be mounted on the back of monitor, making SMARTSTATION Thin Client ideal for any space-constrained environment.

SMARTSTATION Thin Client series are available with Linux Embedded, Windows 7 Embedded , Windows 10 IOT OS.

SMARTSTATION is dedicated to be the professional thin client and embedded computing provider for over 21 years and now we are one of the top independent manufacturer of thin client. With providing design, manufacturing and service support functions for embedded computing SMARTSTATION is your best embedded solution partner to empower more efficiency and safety for your e-World

Home

Intro

Benefits

Manages

Specs

Interface

Contact



Smart **2510V2**

SMARTSTATION THIN CLIENT BENEFITS

GREEN

Lower power consumption for energy saving and reduce CO2 for earth saving.

Our products focus on reducing, reusing and recycling materials used in our manufacturing operations.

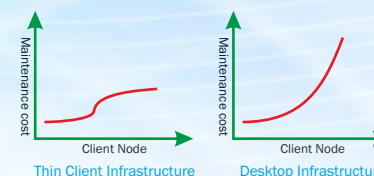
Our environment compliance effort including ISO 9001:2008 Certification.

DURABLE

Fanless design for long life span, noise free and higher system reliability. Our thin client components are used industrial level and solid parts for long lifespan.

ECONOMIC

Lower power cost of ownership (TCO): Save more than 50% off cost than using traditional desktops for energy saving and maintenance cost saving.



SECURE

Since the software becomes entirely confined to the servers, thin clients are protected from the use of unauthorized software or the introduction of viruses, Unlike PCs and traditional laptops, thin clients are locked down and offer greater security against theft, damage, malware, spyware and viruses.

Very Low Cost

Ultra Low Power

Better Performance

Secure

Power Saver

Easy to Manage

Stable & Reliable

Fanless Design

Eco Friendly

Maintenance Free

Home

Intro

Benefits

Manages

Specs

Interface

Contact



Smart **2510V2**

Specifications

Rockchip Quad Core 1.6 GHz RK3188

1GB DDR3

8GB Flash

VGA : 800x600/1920x1080 Max

HDMI : 1280x720/1920x1080 Max @ 60Hz

Color Depth : 32bit true color

Protocol support : Microsoft RDP 8.0

Graphic chips : mail 400 mp4

Video support

Device dimension 155x110x25mm

Packing size : 240x175x55mm

Weight : NW 0.25 kg, G.W. 0.55 kg.

Power Supply : Auto-sensing 100-240V AC,

50/60 Hz, 5V/2A DC

Consumption : Less than 10W

Wireless : Support additional

Interface ports : SPK, Mic, Switch, USB, VGA+HDMI, DC Port

Home

Intro

Benefits

Manages

Specs

Interface

Contact

Connectivity



Smart **2510V2**



- 1 Memory Card Slot
- 2 Power Indicator
- 3 Power Switch
- 4 LAN
- 5 Audio in-out
- 6 USB 2.0
- 7 HDMI
- 8 VGA
- 9 DC IN

Home

Intro

Benefits

Manages

Specs

Interface

Contact



Smart **2390V2**

CONTACTS

SURENDRANAGAR

2nd Floor, Manivir Complex, Vitthal Press Road, Surendranagar-363001, Gujarat, INDIA.

Cell. : +91 982 420 8213 / +91 937 465 1621, E-mail : sales@smartstation.in

AHMEDABAD

202, Manas Complex, Opp. Star India Bazar, Satellite Road, Ahmedabad-380015, Gujarat, INDIA

Cell. : +91 982 420 8213 / +91 937 465 1621, E-mail : sales@smartstation.in

HONGKONG

Unit 04, 7/F, Bright Way Tower, No. 33, Mong Kok Road, Kowloon, Hongkong,

Cell. : +86 1371 4623 640, E-mail : sales1@smartstationhk.com

U.A.E.

P O Box No 413028 , Dubai , UAE

Cell : +971-528663955, E-mail : sales@smartstationme.com

[Home](#) ■

[Intro](#) ■

[Benefits](#) ■

[Manages](#) ■

[Specs](#) ■

[Interface](#) ■

[Contact](#) ■

